



"They will be called oaks of righteousness, a planting of the LORD for the display of his splendor."

Isaiah 61:3

Seeds

On behalf of the Imagine Network, Catalyst Ministries and the future disciples of the Mattaw Children's Village, we would like to greet each of you in the name of King Jesus, our wonderful Liberator and Lord. We are so excited that you are considering partnering with us in what we believe is a work defined by God's word, directed by His Spirit and birthed out of His love for us and for the broken and desperate children of Kenya, Africa. If you have not had the chance to familiarize yourself with the purposes and goals of the Mattaw Children's Village, I would encourage you to read the brochure posted on one of our websites or contact us directly.

In short, the Imagine Network and Catalyst Ministries have come together in the name of Jesus to build and operate a children's orphanage in Kitale, Kenya called the Mattaw Children's Village. There are currently 1.9 million orphans in the country of Kenya and after several years working in Africa, God has opened a door for us to build a children's village from the ground up that will be a place filled with the love of the Lord and a training ground for Kenya's future Christian leaders. *The word "Mattaw" is the Hebrew word for "garden" found in Isaiah 61:3 and it is our vision that God will use us together to create a beautiful garden of young strong righteous disciples for the display of His splendor.*

We are seeking those who have a fire in their soul for the lost and broken children of the world. Our hope is that this work will be a catalyst for all of us to fulfill a collective dream and to carry out the very heart of God's call on our lives. For some of you, the seed that you plant in this garden will come in the form of the finances to put into place the bricks and mortar needed to provide safe housing, a place of worship, and medical clinic for the children of Mattaw. For others, it will be your faithful prayers that spur us on during the long days and often short nights that accompany a work such as this. *Ultimately some of you will fulfill your dream in person on the ground in Kenya working side by side with our house parents and missionaries there to construct a home, dig a water well, give immunizations, and personally bring healing to a broken life through the love of the Lord.* This packet includes detailed information about the various ways that you can be a part of this vision including such things as construction cost, specific prayer request, and information on how you can sponsor the missionaries there in Kenya. We have tried to be as detailed as possible so that every part of this project is done with excellence and integrity. We beg you if there is ever a question in your mind about the integrity of this process, please ask us so that we can put your mind at ease about exactly where and how resources are being used.

We have not finalized our child sponsorship packages yet because we are still working diligently with a social worker there in Kenya to identify and legitimize orphans from our area that are in the most need of our help. We hope to have some child sponsorship information available very soon.

We hope that as you read this packet God will impress upon your heart how you are to be involved in this work and if you are not to be involved, we pray that God would bless the things that He has called you to. Please feel free to contact us through one of our websites if you have specific questions or if the Lord compels you to be a part of growing this garden with us. *And whatever you do, remember that above all things God has called us to:*

Love Jesus

Love others

Sincerely,

David Chan
Founder and President of the Imagine Network

David Chan, Founder and President
The Imagine Network
1600 Harvey Dr., McAllen, TX 78501
www.theimagnenetwork.org
david@theimagnenetwork.org
956-874-9201

Kevin D. Kirkland
Founder and President of Catalyst Ministries

Kevin D. Kirkland, Founder and President
Catalyst Ministries
5825 Melrose Ave, San Angelo, Tx. 76901
www.catalystministries.org
kevin@catalystministries.org
325-374-5904



"They will be called oaks of righteousness, a planting of the LORD for the display of his splendor."

Isaiah 61:3

How can you plant a seed in this garden?

CHURCHES OR ORGANIZATIONS

If you are a pastor of a church or the leader of a Christian organization this project may be the catalyst for you and the people you serve to be on the ground level of an incredible mission project. Over the past five years we have noticed that there is an incredible passion growing in Christians to be a part of a mission work through their local church, but for so many, they do not know where to start. As a leader of a Christian ministry in the United States, I try to travel to Africa with a team once a year for the sheer purpose of discipleship. The reality of the death and devastation of a place like Africa is hard to grasp from slide shows and missions conferences. **Until I held the hand of orphaned six year old, or smelt the stench of imminent death, or saw the results of poverty with my own eyes, I could not understand fully the call of God on my life to bind up the broken hearted.** Not everyone is called to go to Africa on a mission trip, but for some it can be a life altering experience and a huge step in the discipleship process in their lives. We believe this opportunity for discipleship is one of the most powerful and effective we have ever seen, and the fruit that we have experienced from it could not have been cultivated in any other way.

As a leader, we want to partner with you not just in seeing the vision of Mattaw lived out, we want to partner with you in seeing the great commission lived out in the people that you serve and lead. We want this project to be a catalyst for something amazing in your life and the life of your church or organization right here in the States. **We feel certain in our hearts that God has already chosen the churches and organizations with which we are to partner, and we know that together we will see God do more than we could ever think or imagine according to the power at work in His bride, the Church.** You will find the specific needs in this packet including specific cost for certain projects in the village, and you will see that the eternal fruits far outweigh the monetary cost.

Come plant with us. We recognize that each of you and the churches you serve are in different places and are called to commit on different levels. We want to pursue this dream with you so we have designed several levels at which you can commit to this work.

Providing Seeds We are in desperate need of committed prayer partners for all aspects of our ministry and would love for you to facilitate those through your church. On the financial end, if you are not able to commit to a long term project, we are always in need of one time gifts for construction, administration, house parents, or even for our missionaries.

Sowing together You may be in the position as a church body to commit more fully to the entire project by taking on the cost of a particular construction project or making a one year commitment to sponsor the children in an entire home, or to sponsor our missionaries. We would love to be a catalyst for your discipleship process and facilitate a trip to the home in Kenya for a team from your church or organization.

Digging deep We are praying for several churches to really help us dig deep by making a long term commitment to several aspects of the work. We are certain that God has already chosen these partnerships for us- that He has already put a dream in your heart and the heart of your people to dig deep with us. We hope that these groups will make a long term commitment to the missionaries, the children, the house parents, and or take on the entire cost of one of the many construction projects that are left to complete. We want to make purposeful trips to the Mattaw Children's Village available for your church body and live out this dream together of seeing the children of Mattaw becoming incredible disciples of King Jesus.

At whatever level you feel God calling you to be a part of this vision, we are ready to discuss those opportunities and find out how we can plant together. Please give us a call or email us to discuss all the options. We look forward to hearing from you.



"They will be called oaks of righteousness, a planting of the LORD for the display of his splendor."

Isaiah 61:3

YOUTH GROUPS, SUNDAY SCHOOL CLASSES, SMALL GROUPS, FCA GROUPS, ETC.

One of the unique gifts of this vision, is that it allows for involvement from every part of the body of Christ. Your group may not be able to fund the construction of an entire project, but you may be able to raise the funds for a child sponsorship monthly, or to fund one of our missionaries monthly, or maybe even to provide the beds for a certain number of children in the Mattaw village. In the needs list that accompanies this letter, you will see that there are several ways that your group can have a major impact on the vision of the Mattaw Children's Village. And there may be ways that you can impact the children of Mattaw that are not on the need's list. You could collect coloring books or small items, write letters of encouragement to our children, our missionaries, or our house parents, or simply commit to pray for a specific need every time you meet. For some of you, maybe the Lord is opening a door for you one day to be a missionary in the Mattaw Children's Village or somewhere else. Whatever the case, we are asking those of you that lead a small group of some kind to pray about partnering with us to see the children of Mattaw become incredible life giving disciples of King Jesus. **Our contribution is only small while it remains in our hands, it becomes tremendous the moment we put it in the hands of the Lord.** Please contact us so that we can discuss any and all options with you.

INDIVIDUALS:

Often times when I consider the enormous task of caring for the 1.9 million orphans in Kenya alone, or when I think about the overwhelming spiritual degradation that has overcome our country, I find myself paralyzed and I hear the familiar words of the enemy, "You could never really change anything." Let me just share a quick story. In the summer of 2005, two 22 year old young ladies boarded a plane in Dallas, Texas for Kenya, Africa with zeal in their hearts and a passion to rescue the perishing. They lived in huts, they dealt with sickness, corruption, ignorance, and the evil schemes of the enemy, they ate "who knows what," and spent countless hours with the orphaned children of Kenya.



A year and half later, the Mattaw Children's Village was birthed out of their labor and love. In August of 2007, I sat next to one of the orphaned boys that they poured their hearts into for a year and a half and listened to him quote the scriptures of God and talk of becoming an engineer. His face was alive, his spirit was strong, he moved with kindness and integrity, and I have no doubt that not only will he be an engineer, he will be an incredible disciple of King Jesus. **His name is Caleb, he was once an orphan, he is now an heir to the throne of Christ.**

Yes, the task is huge, but the God that lives in each of us is more than able.

There are countless ways as an individual to be involved with this vision. For some of you, financially you may not have the resources to give in a major way, some of you have the resources to fund the entire project. Either way our hope is that individually, you ask God how you can be a part of seeing God do something so great that no individual could take the credit. I would ask that you consider getting on the list to be a child sponsor for the future or consider sponsoring one of our missionaries, or commit to praying daily for a specific prayer need. However God leads you, remember that if we abide in Him, He will produce fruit from our lives that last.

HERE WE GO

We hope that the seed's list that is attached gives you a more detailed look at the vision that God has put before us, and we pray that God will continue to bless you as you seek to be a blessing to others.



"They will be called oaks of righteousness, a planting of the LORD for the display of his splendor."

Isaiah 61:3

Prayer Seeds

PLEASE PRAY FOR:

- the 1.9 million orphans in Kenya, Africa.
- the children that will eventually make up the family of the Mattaw Children's Village.
- our missionaries on the ground in Kenya, Bud and Kimberly Huffman and soon to be baby Huffman. Pray for strength, patience, compassion, authority over the enemy, and an amazing amount of God's love and peace to flow into them and from within them.
- the house parents that will be living with and training the children of Mattaw. Pray for wisdom, love, peace, strength, integrity, and that they would be rivers of God's compassion for the children and one another.
- the leadership of the Imagine Network and Katalyst Ministries. Please pray that we would move with compassion and truth and that our hearts would always beat as one. Please pray that God would keep His call for us to make disciples in the forefront of our minds and that our ministries here and abroad would be strong and life giving.
- the people of Kitale, Kenya. God is doing something amazing in the city of Kitale and it is our conviction that He wants to absolutely take over that area by His spirit. Please pray for those that will lead the charge there- they have become our partners in ministry there and our friends.
- the overall vision of Mattaw- that these children broken and beaten would one day become a beautiful garden of righteousness for the display of the Lord's splendor.
- the provision of the Lord to come quickly as the vision He has given moves into being.
- a heart of unity among everyone who has committed and will commit to seeing the Mattaw Children's Village be all that God has called it to be.

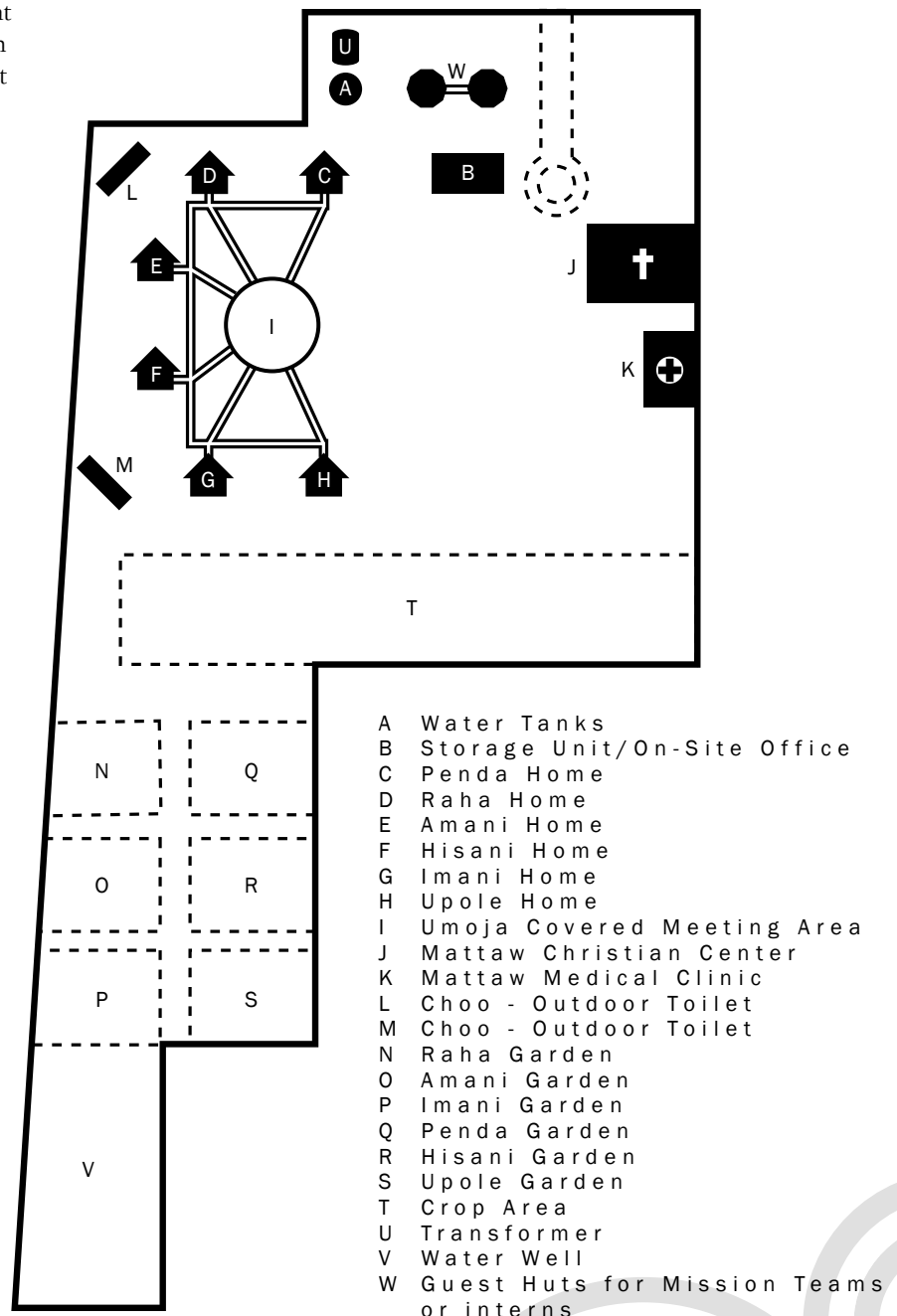
The Mattaw Children's Village

Excluding the land which is completely bought and paid for, the total cost of the construction of the buildings shown here including the cost to have electricity and a good water supply is an estimated \$170,000.

There is still room for a playground (not pictured) and a football (soccer) field which we plan to work on as the village takes shape. The land is actually large enough to accompany six more home units or several housing units designed for missionary teams in the future. Our goal in phase one of the construction is to get the buildings you see here up and running and to fill the land with children. *It is a beautiful piece of land but it will look even more beautiful when there are children running everywhere.*

MORE THAN A NAME

As you may have noticed on the overview of the land, each home unit has a unique name. The names of the homes are the Swahili words for the fruits of the Spirit as described in Galatians 5:22. *A garden is only as good as its fruits, and we are believing that the Mattaw Children's Village will produce wonderful yields of Penda (love), Raha (joy), Amani (peace), Hisani (kindness), Imani (faithfulness), and Upole (gentleness).* The structure that is sitting between the homes is an open air covered area designed to be a meeting place for the families for meals, worship, or just to be together. It is appropriately named Umoja which is the Swahili word for "unity." Our first home unit, the Penda home should be completed by the end of 2007



This drawing is very close to scale but the home units are drawn a little larger so that you can see the configuration of the units on the land

The Mattaw Home Unit Philosophy

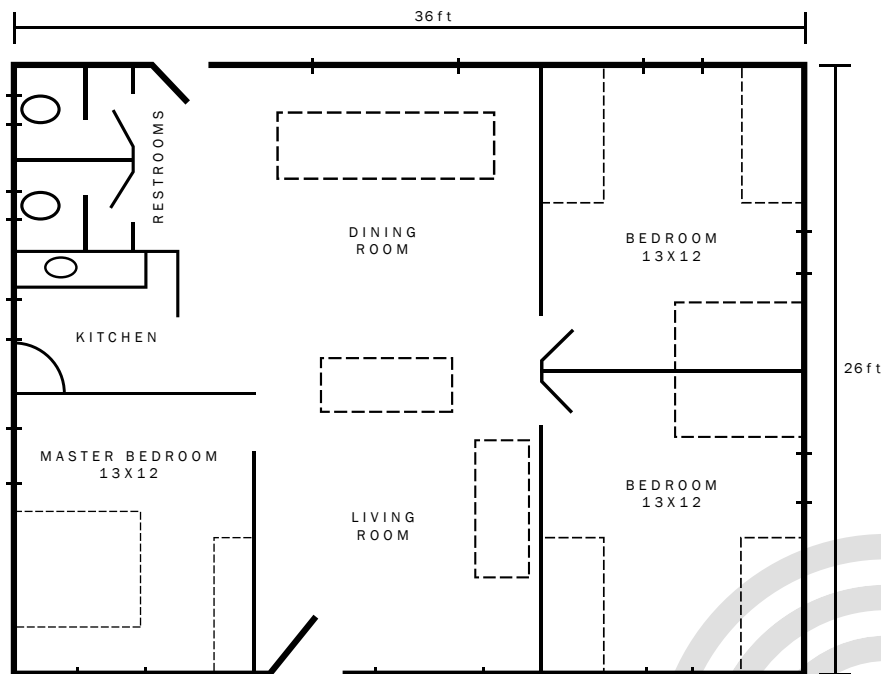
After spending almost two years in and around Kenyan orphanages and researching orphanages from both sides of the globe, we have decided that the most effective way to house our children is in the same manner you house yours- in homes as a family. The six homes you see on the drawing of the land can be seen here in greater detail.

Each home is complete with space for 12 children to sleep and two parents. As you can see there is a room for the boys, a room for the girls, a master bedroom for the house parents, a sitting area (living room) a small Kenyan style kitchen, a dining area, and two toilet and shower rooms. These homes are built completely of stone and steel and maintain a very Kenyan look and feel.

It is important that we do everything we can to prepare these children for a future in Kenya so we must take that into account when we are designing a place for them to live. The house parents that will be living with the children are Kenyan and as of August 2007, we already have three sets of parents ready to move into the village. *We have been training the house parents since February of 2007 and feel very confident that each couple was given to us by God for this exact purpose.*



The Penda Home unit nearing completion





“They will be called oaks of righteousness, a planting of the LORD for the display of his splendor.”

Isaiah 61:3

An Eternal Investment

One home unit including a set of outdoor toilets can be constructed and furnished for an estimated \$15,000 U.S.

(estimates quoted in U. S. dollars at a conversion rate of 62 shillings per dollar)

COST BREAKDOWN:

Steel Roof	\$3100
Sand	\$460
Ballast	\$325
Hardcore stones	\$325
Stone blocks	\$715
Dressing stones	\$100
Bricks	\$350
Timber	\$180

Concrete Foundation	\$100
Concrete Slab	\$310
Exterior walls	\$250
Ringbeam	\$125
Plaster	\$250

Windows	\$500
Exterior doors	\$350
Interior doors	\$200

Labor	\$2300
-------	--------

(includes plumbing, electrical work, and food cost for the workers during the build)

Miscellaneous construction items	\$250
----------------------------------	-------

Porch construction	\$350
--------------------	-------

1 cho (outdoor toilet)	\$500
Septic tank	\$500

Furnishing	\$1780
------------	--------

(This price is to completely furnish the entire home including dining table, couches, children's bunk beds, etc.)

“Welcome Home” child starter supplies	\$1680
---------------------------------------	--------

Upon entering the home each child will receive school shoes, play shoes, slippers, clothes, toiletries, bathing towels, one blanket, 2 sets of sheets, their own Bible, school supplies including back pack and uniform, a jacket, pillow, socks, and several other essentials. \$140 per child.

TOTAL ESTIMATED COST FOR ONE HOME UNIT:	\$15,000
---	-----------------





"They will be called oaks of righteousness, a planting of the LORD for the display of his splendor."

Isaiah 61:3

Other construction based needs for the village:

Umoja Family Meeting Area This is a thatch roof structure that is located in the middle of the six home units that will serve as a meeting area, outdoor eating area, and outdoor worship area.	\$10,000
Storage house This building will be the same shape and size of one home unit and will be used to store crops from the land and supplies for the entire village.	\$10,000
Mattaw Christian Center This will be the church built on the property that will serve as a place for the entire village to come and worship. There are no churches currently in the village where Mattaw is located and we hope that this facility becomes the center for the discipleship of our children and the children of the surrounding areas for years to come.	\$25,000
Mattaw Medical Clinic This will be built on the Mattaw property but it will serve the surrounding areas as a place for inoculations and treatments of everyday medical issues and eventually for HIV/AIDS testing and treatment.	\$20,000
Guest huts to accompany missionary teams or summer interns	\$10,000
Installation of electrical transformer: (must be installed before the village will have electricity)	\$10,000
Water supply (includes drilling well, water tanks, water pump and running of water lines to structures)	\$10,000

Each of these projects is an essential piece of the overall vision of the Mattaw Children's Village, so please let us know if God leads you to help us complete one of them.

The Hands and Feet



The real life hands and feet of the work behind the work of the Mattaw Children's Village belong to the incredible missionaries that are on the ground in Kenya. Those are the hands and feet of Kimberly and Bud Huffman and soon to be baby Huffman. Kimberly has been working in Kenya since the summer of 2005 and Bud has been on the ground there since the summer of 2006. Bud and Kimberly were married in January of 2007 and have been the catalyst for the progress of the Mattaw Children's Village since the beginning of 2007. Before going to Kenya Kimberly and Bud both served as leaders on ministry teams here in the States. They are two of the most gifted and powerful young people you will ever meet, and their passion for the things of God and for the broken children of Africa is unmatched.

Kimberly, or "momma," as so many of the Kenyan children call her is a beautiful and strong example of a life called of God and a life surrendered to God. She works tirelessly with our social worker in Kitale to find legitimate orphans and to process them for entrance into the Mattaw Children's Village. She also spends much of her time and gifts in working with our house parents and several other ministries in Kenya that are designed to bind up the brokenhearted. Since the purchase of our land in Kitale, she has been working with local schools in the village to conduct back yard Bible clubs and to learn as much as possible about the culture of that particular area. She has also personally worked with more than five different orphanages in Kenya over the past couple of years and has researched the inner workings of dozens. She has spearheaded the collecting and writing of our policies and procedures which should be completely ready before the home becomes fully operational in the spring of 2008. *The Mattaw Children's Village is a direct result of Kimberly's dream, her calling, and her passion and we feel so privileged to have the chance to be a part of her dreams coming true.*

Joseph, or as he is known to us and the street orphans of Kitale, "Bud" has been working around the clock since the beginning of 2007 to oversee the actual construction of the village. He played a major role in finding and securing the 7 acres we purchased in April and has been over every piece of construction thus far. He has an infectious personality that has certainly captured the hearts of the children of Kitale. *No matter where you go with Bud in Kitale, children are soon to follow.* Bud has researched the construction processes behind several orphanages and has done an incredible job insuring that the structures that make up the Mattaw Children's Village are built with excellence and efficiency. He is working daily with contractors and suppliers to make sure that when the funds are in place, the structures will be ready to be built. We are so excited to be a part of his dream as well, and we hope that one day soon, the structures he has been building will become the homes for the homeless children of Kenya.

We are praying and hoping that God will lead at least two more missionaries to Kitale to serve along side Kim and Bud for the future, because the Mattaw Children's Village only holds 72 of the 1.9 million orphans in Kenya that need a home, there is much work left to do.



"They will be called oaks of righteousness, a planting of the LORD for the display of his splendor."

Isaiah 61:3

HOW CAN YOU HELP BUD AND KIM?

First and always foremost, they need your prayers. They will have a new child soon and are on the frontlines of the work we are doing in Kenya, and it will be the prayers of the righteous that get them through the long days and short nights that accompany this kind of work. We would love for you to consider being a committed prayer warrior for Bud and Kim. Please check out the prayer partner form in the "Planting Together" packet on one of our websites.

Because it is our heart's desire in this project to do everything with excellence and above reproach, we have decided to raise all the support for our missionaries separate from other parts of the ministry. This allows those that support the ministry financially to rest assured that the funds raised are being used in the manner that they desire. Here is a basic look at what we need to accomplish for Bud, Kim, and baby.

Housing monthly (includes rent and utilities at their home in Kitale, Kenya along with funds for the necessary staff including night watchman and so forth)	\$1000
Medical Insurance	\$500
Auto allowance (fuel and upkeep on Mattaw vehicles)	\$250
Cell phones	\$100
Actual salary combined monthly	\$2000
Total combined monthly	\$3850
Airplane tickets (once a year for family) Estimated Total:	\$5000

Emergency plane tickets account (this is a fund set up that we will like to keep around \$5000 available in the case that we must bring them home due to an emergency- they are in Africa and with the current state of terrorism and other things in the world today, we want the ability to get them home if they were in imminent danger or if there is a medical emergency for either of them or their child)

If you would like to be a prayer partner for Bud and Kim or you would like to partner with us in insuring that they receive the financial support they need, you can simply get the appropriate form for your situation from the "Planting Together" packet, fill it out and send it to us with your first month's contribution. We are asking that any churches, groups, or individuals that partner with Kim and Bud in this way make a commitment for at least one year. You can send your contribution monthly or yearly, and if you cannot commit to one year you can simply grab a form for a one time gift and support them that way. We will make sure that you get a picture of Bud and Kim as a reminder of your commitment and updates from them in the field on a regular basis. We are so excited about the incredible work that this young family is accomplishing in Kenya, and it is our goal to give them every tool and opportunity to accomplish more and more, but more than anything we are here to help them individually and together become an incredible family in the Lord. If you have any questions or concerns about Bud and Kimberly, please do not hesitate to contact us. We look forward to hearing from you and to being witnesses to the incredible things God is prepared to accomplish through your support. Imagine- you could change the world.



"They will be called oaks of righteousness, a planting of the LORD for the display of his splendor."

Isaiah 61:3

HOUSE PARENTS AND VILLAGE STAFF

We are so excited about the opportunity that we have to be a huge blessing to the orphaned children of Kenya, but none of it would possible without our house parents. The house parents are the true heart of what we want to accomplish with the children of Mattaw. **They are there everyday pouring the love of Lord into the children and doing the things that only a mother and father can do.** We can assure you that we have sought the Lord about who these couples should be and we feel absolutely certain that the couples we have in place currently are exactly who God intended to be there. We are also excited about the opportunity to be a blessing to the staff of the village and we recognize that without them, this project could not exist. You can be certain that any investment you make in the wonderful people who fill these roles is a direct investment in the safety, the well being, and the future of the children of Mattaw.

After being a part of an orphanage in Kenya for the past two years, and researching dozens of others in the states and in Kenya we feel certain that using house parents is the direction that God has led us. Each of our house parents will be required to go through a serious discipleship program and will be accountable to our missionaries there in Kenya. They will also meet together with our social worker and our missionaries on a regular basis to discuss any issues with the children and other important matters.

The village staff will consist of daytime and nighttime watchmen, gardeners and several other positions. Until we can establish our house parents and allow them to fill some of these very necessary roles, we will employ this staff full time. It is essential that we do all we can to make sure that our children are protected and cared for in a manor worthy of the calling of the Lord on us and that we are good stewards of the land that God has blessed us with in Kenya. If you would like to support our house parents or staff, please check out the forms designated for them in the "Planting Together" packet.

ADMINISTRATION

Because we do not use money raised for our missionaries or our children on administration, sometimes this can be an area that we struggle with financially. Administration includes such things as the printing of this packet, website upkeep, pictures, monthly statements or contribution envelopes, newsletters, and even some larger expenses like plane tickets for our leadership stateside to visit the work in Kenya. These are all things that are vital to the success of the Mattaw Children's Village and even though these funds are not directly spent on the children or the workers there, your support of this work through administration plays a major role in the growing of this garden for the Lord. They will not be used for salaries of Katalyst Ministries or the Imagine Network staff. We would ask that you prayerfully consider helping us in this way and we will commit to being good stewards of the provision God provides for administration. We will have more solid figures as the budget comes together but we estimate with printing, web fees, accounting, and travel this amount will be around \$9000 per year.

MISCELLANEOUS

No matter how well you plan there always seems to be this category of things, but we wanted to include it so that you could see maybe some other ways you could contribute to this work. For instance, maybe you cannot contribute funds but you have access to computers or a supply of tennis shoes or soccer balls or even children's flash cards or stickers. We want to do everything we can to make sure that anyone who feels led to contribute in whatever way has the opportunity to do so. We would love to hear from you if you would like to contribute in another way. We will tell you that often times shipping things to Kenya can be very costly and timely, but if you will give us a call, we will do our best to give you an opportunity to contribute in the way you feel God has led you. As we move along in this process, we will try to keep an updated "needs" list on our websites so that you can see if there is something there that you could be able to help with.

HOW DO I GET STARTED?

If you are a church or organization, you will need to give us a call or shoot us an email so that we can talk about what kind of sponsorship you would like to be involved in. You can also go to one of our websites and print off the forms for church partnerships and see the options there. If you are an individual you can also give us a call, shoot us an email or you can download the forms for individual sponsorships and prayer partners right off one of our websites. Either way, please do not hesitate to get involved as the Lord leads. We are looking forward to hearing from you and to seeing God do more than we could think or imagine.

IMAGINE, WE CAN CHANGE THE WORLD.